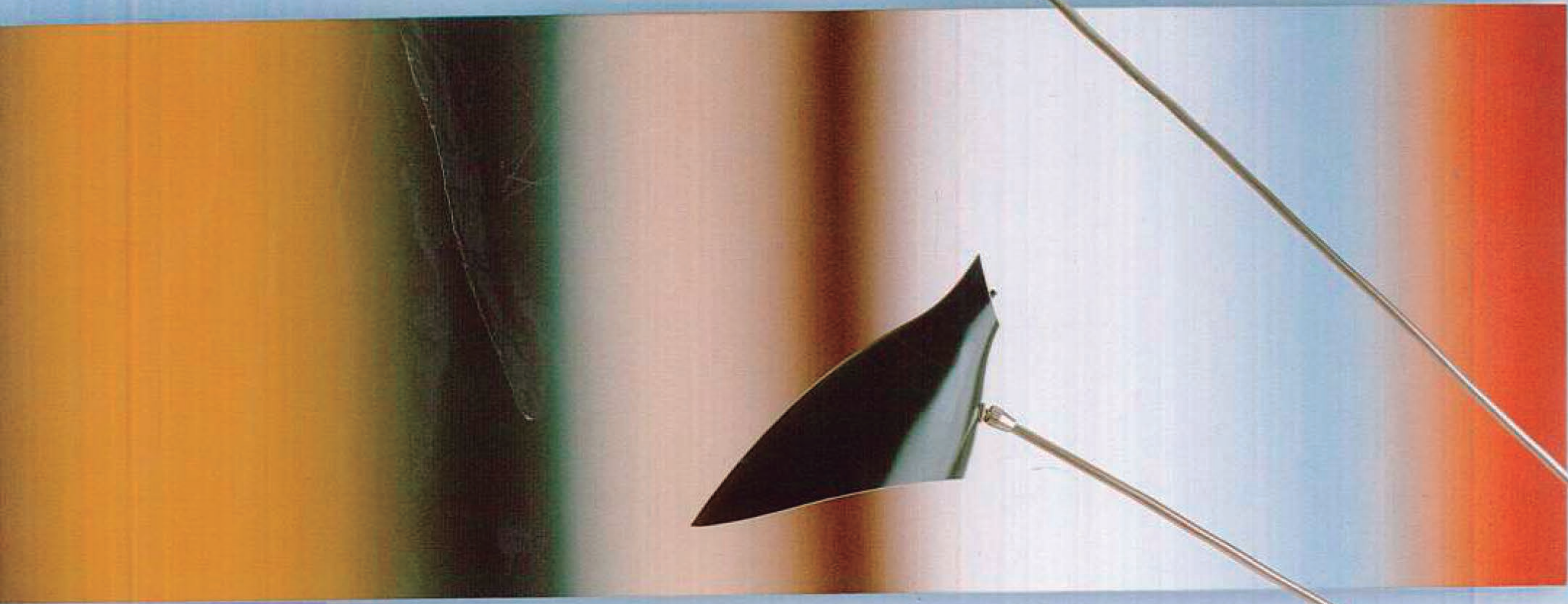


INTERIOR DESIGN®



best of residential

ARCHITECTURE & DESIGN



610 sf
\$500,000 budget
3 bedrooms, 3 bathrooms

Figamma

FINANCIAL DISTRICT APARTMENT, NEW YORK

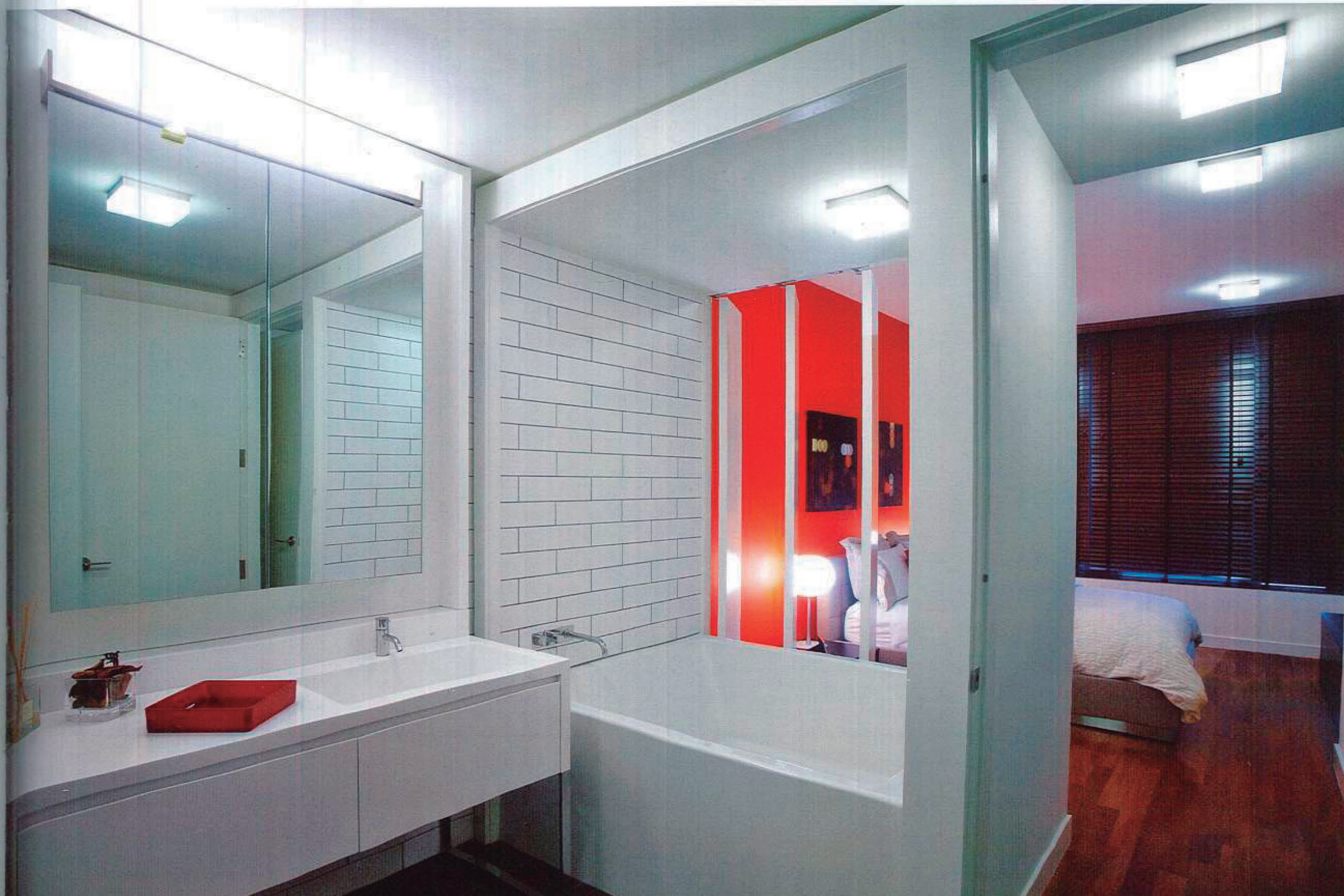


Clockwise from above: The master bedroom incorporates a study. Figamma accented the larger of two guest rooms with vibrant red paint; Jasper Morrison Glo-Ball lamps sit atop the bedside tables. Swiveling panels between the sleeping and bathing areas allow for soaks with a view. ➔

Open-plan, loft-style arrangements aren't for everyone. At least, not for this Bogotá-based firm's longtime client, a globe-trotting businessman with two grown children and frequent guests. Figamma steered the client away from the studio he'd initially selected for his Manhattan pied-à-terre, suggesting instead a nuclear multi-bedroom layout that could more graciously host visitors and gatherings.

To get ample square footage, the designers joined two apartments, both located on the 36th floor of a downtown high-rise with spectacular Hudson River views. The newly formed three-bedroom had less advantageous attributes, too; namely, a tricky acute-angled window wall in the living/dining area. Custom silk-and-wool area rugs help soften the angularity and delineate the space, while top-of-the-line AV equipment offers ample distractions. Simple and sophisticated furnishings were selected from a roster of edgy Italian labels: Minotti, Poltrona Frau, Natuzzi, de Sede. Leather, high-touch textiles, wood, colored glass, and warm metals provide rich accents, as do gypsum tapestries fabricated by Colombian artisans.

A wet bar—like concealed kitchen in the living area allows for easy entertaining. Walk-in closets in all three bedrooms are sure to accommodate whatever baggage a houseful of guests can provide. And when the host needs some quiet time, he can retreat to the private lounge in his master suite.





Clockwise from top left: The master bedroom has a private lounge area with top-of-the-line Bang & Olufsen AV equipment. Subway tile clads the en suite master bathroom. Sliding panels can be closed to hide the kitchen from the triangular living/dining area. Yellow dominates the smaller guest room.



PROJECT TEAM LINA MARIA GONZÁLEZ, FERNANDO GONZÁLEZ, LUZ PIEDAD SANTA
PHOTOGRAPHY JUAN FELIPE RUBIO
www.figamma.com



